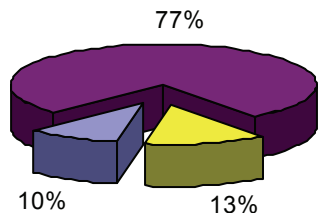


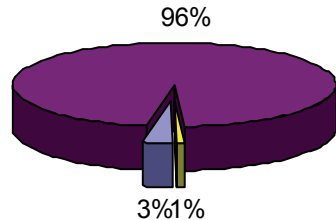
# Statement of Financial Activities for year ended 31 Dec 2009

(Further information on BCM's accounts is available from Grosvenor House)

**TOTAL INCOME - £3,316,102**



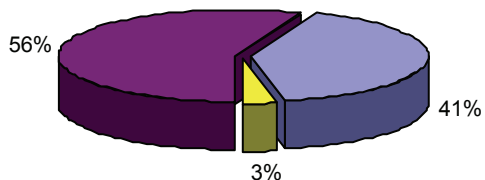
**TOTAL EXPENDITURE - £3,126,745**



- Statutory income
- Fundraising & Charitable Trusts
- Other

- Direct Charitable Expenditure
- Cost of generating voluntary income
- Other

**DIRECT CHARITABLE EXPENDITURE - £2,998,172**



- Work with children and young people
- Work with older people
- Other

Registered office:  
**Grosvenor House**  
5 Glengall Street  
BELFAST BT12 5AD

Tel: 028 9024 1917 Fax: 028 9024 0577

E-mail: [info@belfastcentralmission.org](mailto:info@belfastcentralmission.org)

Website: [www.belfastcentralmission.org](http://www.belfastcentralmission.org)

Mission Committee office bearers:- Rev R Johnston - Superintendent Minister and Chairman;  
Mr D Gallagher - Hon Secretary

**BCM (Belfast Central Mission)** is one of N Ireland's oldest charities.

Founded in 1889 as part of the Methodist church's response to problems inherent in inner-city life,

BCM is involved with all sectors of the community, irrespective of religious or political affiliation.

Our aim is to support those most in need in our society and enable them to reach their full potential.

We do this through our social care projects, cross-community programme and our three congregations.

Inland Revenue Number for Charitable purposes XN 46001  
Company limited by guarantee NI55693



## BCM'S ONE HUNDRED & NINETEENTH Annual Report



**2009**

### MISSION STATEMENT

"To enable those most in need across Northern Ireland to reach their full potential."

## A message from Richard Johnston, Superintendent



BCM as a summary of its purpose for existing, constantly seeks to recall its strap-line: **Supporting those who need it most.** As I now sit writing my

third contribution to an Annual Report, I believe we face the challenge of focusing all our efforts on achieving this purpose throughout every aspect of the work we undertake.

As the economic climate continues to challenge not only charitable organisations' and the statutory sector's capacity to meet the needs of the population, but also each of us as individuals as we seek to meet our responsibilities, we are faced with a challenging and sobering reminder that those whose needs are greatest are often the first to have support withdrawn.

BCM values highly all who continue to support the work we undertake, either through their personal giving, grant

### Special thanks to:-

Ardbarron Trust  
Children in Need  
Roedean School Mission Fund  
Ulster Garden Villages Ltd  
Victoria Homes Trust  
Comic Relief  
The Souter Charitable Trust  
The Sydney Black Charitable Trust  
Northern Bank Employees Charity Group  
Tesco Charity Trust  
The A E Harvey Charitable Trust  
Hilton in the Community Foundation  
NIE Staff Charity Fund

making, volunteering, event organizing or moral and prayerful support.

In times of hardship society at every level, from government through to individuals, is called upon to maintain and increase its commitment to those who are hit hardest by changing circumstances. At BCM we are thankful that both our heritage and current range of projects and congregations enable us to continue to respond to the diverse needs of younger people and older people in many areas of Northern Ireland.

“ We greatly appreciate the love and care which Dad receives in Kirk House. We always find the staff helpful and approachable when advice is required. Kirk House is a real home from home.”

Once again, I note with gratitude the dedication and commitment of our staff and volunteers. Without their enthusiasm and determination BCM could not maintain and develop the services it offers. I am encouraged to see the way in which staff and those who benefit from care within our projects are taking initiative in developing creative and effective ways of supporting and enhancing the care provided.

As an organization, BCM looks with confidence and expectation toward the on-going development of caring, supporting and empowering services in Northern Ireland.

Volunteer hours Jan - Dec 2009

12,690

## An update from Brian Burns, Director



The financial environment in 2009 continued to be challenging and with very limited statutory investment likely for the foreseeable future BCM

carried out a stringent review of all its budgets. The general economic situation also meant that there was little growth or development in relation to any of BCM's services. We faced the loss of the **Personal Adviser Service** in 2010 having received notification from the South Eastern HSC Trust that they would not be renewing the contract. It was stressed that this was a financial decision and is not a reflection on the quality of the service.

In spite of the financial difficulties, the value of the services cannot be underestimated and our projects continue to provide much needed support to many vulnerable people.

**Anderson House Supported Housing Project** offers intensive support to 14 young people between the ages of 16 and 21 years in Bangor, Newtownards, Belfast and Dungannon. The service is robust and provides packages of support tailored to the individual needs of the young person.

**LITE 16-25 Projects** provide community based support to over 70 young people including a small number with learning difficulties. Staff work tirelessly to help each young person integrate successfully into community life. The projects are sustaining high levels of contact with the young people and their feedback is helping to inform future development of the projects.

The **Therapeutic Counselling Project**, funded by the South Eastern HSC Trust, Wellnet and Comic Relief has had a challenging year due to staff sickness and recruitment difficulties. However, the service continues to help young people deal with many unresolved issues from their past which have contributed to emotional instability and relationship problems.

The support given through the **EAGLE Project** and **Parent Support Project** cannot be overstated. Both are greatly valued by Service Users and continue to exist supplemented by voluntary income, personal donations and fundraising. In the case of EAGLE much has been achieved through the generosity and fundraising efforts of the Parent's Fundraising Group whilst volunteers from Methodist Churches in Newtownards have given invaluable support to the Parent Support Project.

BCM's work with older people in **Kirk House** and **Life 60+** sets and attains the highest standards. This is validated by those who commission the service and the body which carries out inspections. Service Users and their families have also voiced their satisfaction.

BCM's community based **Social Outreach Programmes** continue to grow. The Christmas Toy and Food Parcel distribution reached record levels in 2009 and the Lunch Club and Tea Dances are well supported. We are indebted to our devoted team of **Volunteers** for investing their time to help many aspects of BCM's work.

Moving into 2010 we are mindful of the obstacles and challenges BCM will face, but we remain committed to "supporting those who need it most".